

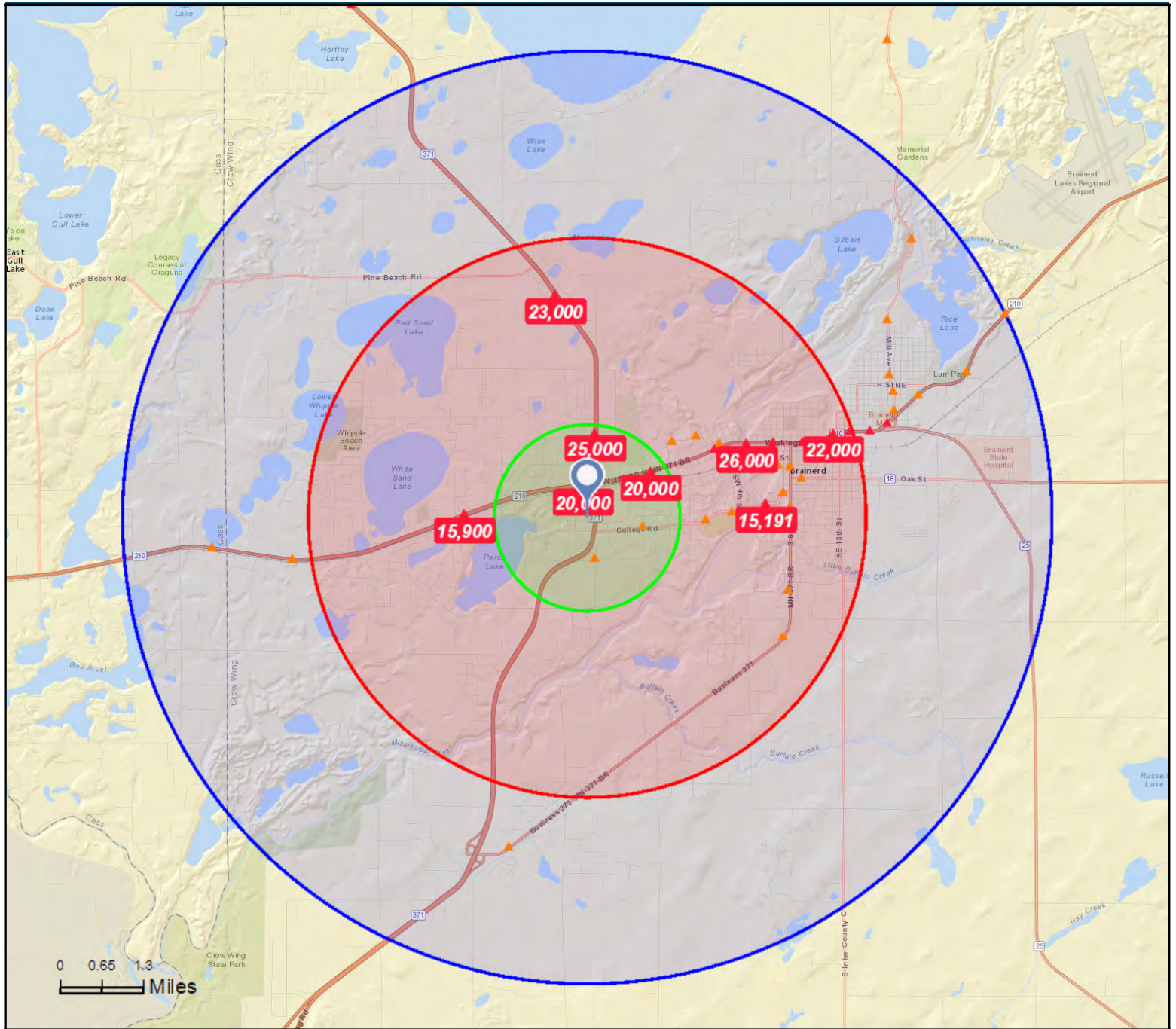
Traffic count information provided by MN/DOT office of Transportation & Data Analysis (www.dot.state.mn.us).



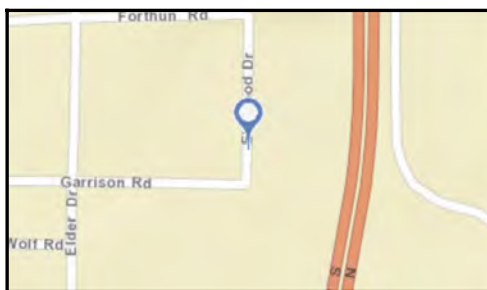
Traffic Count Map

Central Lakes Crossing
13432 Elmwood Dr, Baxter, Minnesota, 56425
Rings: 1, 3, 5 mile radii

Prepared by HJ Development
Latitude: 46.34634
Longitude: -94.24618



0 0.65 1.3 Miles



- Average Daily Traffic Volume**
- ▲ Up to 6,000 vehicles per day
 - ▲ 6,001 - 15,000
 - ▲ 15,001 - 30,000
 - ▲ 30,001 - 50,000
 - ▲ 50,001 - 100,000
 - ▲ More than 100,000 per day



Source: ©2016 Kalibrate Technologies

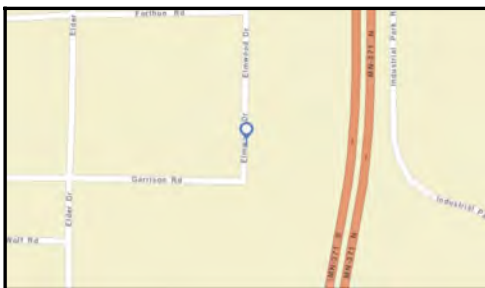
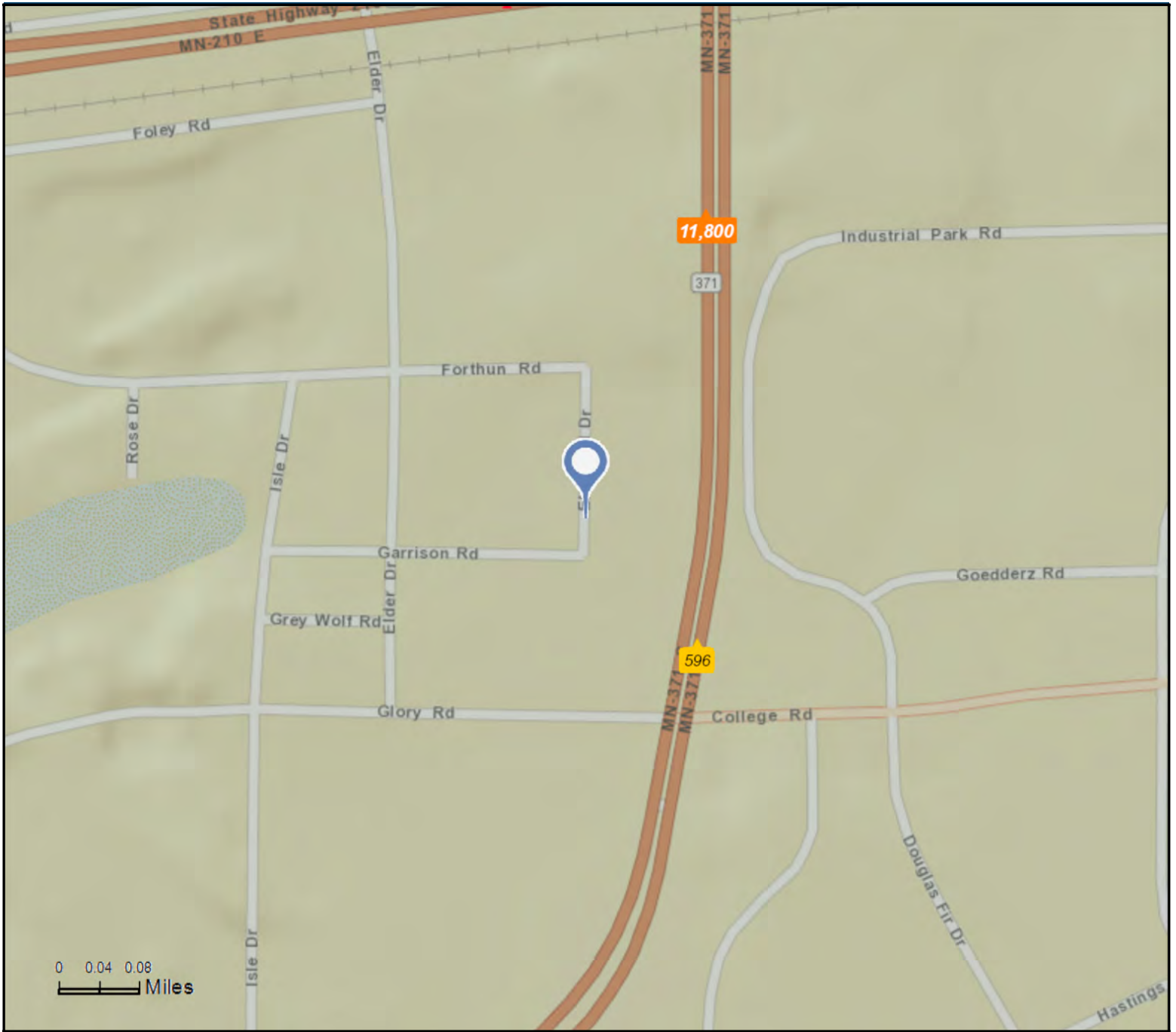
January 26, 2017



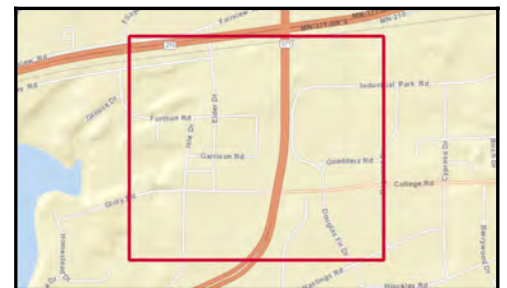
Traffic Count Map - Close Up

Central Lakes Crossing
13432 Elmwood Dr, Baxter, Minnesota, 56425
Rings: 1, 3, 5 mile radii

Prepared by HJ Development
Latitude: 46.34634
Longitude: -94.24618



- Average Daily Traffic Volume**
- ▲ Up to 6,000 vehicles per day
 - ▲ 6,001 - 15,000
 - ▲ 15,001 - 30,000
 - ▲ 30,001 - 50,000
 - ▲ 50,001 - 100,000
 - ▲ More than 100,000 per day



Source: ©2016 Kalibrate Technologies

January 26, 2017



Traffic Count Profile

Central Lakes Crossing
13432 Elmwood Dr, Baxter, Minnesota, 56425
Rings: 1, 3, 5 mile radii

Prepared by HJ Development
Latitude: 46.34634
Longitude: -94.24618

Distance:	Street:	Closest Cross-street:	Year of Count:	Count:
0.12	State Hwy 371	Glory Rd S (0.04 miles S)	2006	596
0.22	State Hwy 371	Hwy 210 W (0.18 miles N)	2006	11,800
0.35	Hwy 210 W	State Hwy 371 (0.15 miles E)	2006	20,000
0.44	Evergreen Dr S	Isle Rd S (0.02 miles S)	2006	11,500
0.58	Excelsior Rd N	Dellwood Dr N (0.02 miles E)	2006	7,171
0.59	Golf Course Dr N	Fairview Rd N (0.03 miles SW)	2006	4,444
0.60	Cypress Dr S	S College Rd (0.02 miles S)	2006	11,110
0.64	Excelsior Rd N	Firewood Dr (0.05 miles W)	2006	3,399
0.84	Hwy 210 W	Conservation Rd (0.32 miles E)	2006	20,000
0.91	Highland Scenic Dr S	in Fisherman (0.10 miles SW)	2006	5,415
0.93	Edgewood Dr N	Clearwater Rd N (0.15 miles N)	2006	25,000
0.93	Fairview Rd N	Inglewood Dr N (0.03 miles SW)	2006	3,485
0.97	Golf Course Dr N	Universal Dr N (0.07 miles S)	2006	7,373
1.10	State Hwy 371	Highland Scenic Dr S (0.01 miles S)	2006	5,858
1.11	Highland Scenic Dr S	Anabec St (0.04 miles N)	2006	4,141
1.15	Inglewood Dr N	Austin D D (0.05 miles N)	2006	2,795
1.18	W Laurel St	Highland Scenic Dr S (0.01 miles SW)	2006	4,226
1.22	Excelsior Rd N	Conservation Rd (0.08 miles SW)	2006	10,613
1.27	W Campus Dr	Mississippi Pkwy (0.09 miles SW)	2006	14,046
1.32	Hwy 210 W	Knollwood Dr (0.05 miles E)	2006	15,900
1.40	Knollwood Dr S	Timber Ln (0.04 miles N)	2006	1,869
1.40	Golf Course Dr	Link Ln N (0.12 miles S)	2006	3,434
1.43	W Laurel St	SW 7th St (0.02 miles SW)	2006	4,545
1.46	Jackson St	NW 7th St (0.02 miles SW)	2006	8,116
1.49	Circle Pines Ct	(0.00 miles)	2006	223
1.55	W Washington St	NW 5th St (0.01 miles NE)	2006	24,500
1.55	W Campus Dr	W College Dr (0.04 miles E)	2006	14,671
1.57	Jackson St	NW 5th St (0.01 miles NE)	2006	7,699
1.61	Clearwater Rd N	Kimberlee Dr N (0.22 miles W)	2006	2,781
1.61	W Laurel St	NW 4th St (0.01 miles NE)	2006	8,740

Data Note:The Traffic Profile displays up to 30 of the closest available traffic counts within the largest radius around your site. The years of the counts in the database range from 2016 to 1963. Over 25% of the counts were taken between 2010 and 2016 and over 77% of the counts were taken between 2000 and 2016. Traffic counts are identified by the street on which they were recorded, along with the distance and direction to the closest cross-street. Distances displayed as 0.00 miles (due to rounding), are closest to the site. A traffic count is defined as the two-way Average Daily Traffic (ADT) that passes that location.

Source: ©2016 Kalibrate Technologies