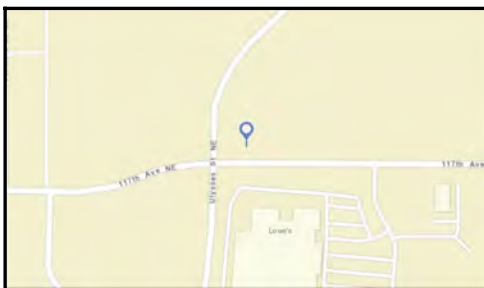




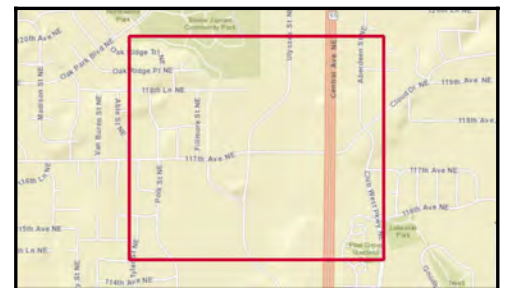
Traffic Count Map - Close Up

North Central Commons
11679 Ulysses St NE, Blaine, Minnesota, 55434
Rings: 1, 3, 5 mile radii

Prepared by HJ Development
Latitude: 45.18318
Longitude: -93.23948



- Average Daily Traffic Volume**
- ▲ Up to 6,000 vehicles per day
 - ▲ 6,001 - 15,000
 - ▲ 15,001 - 30,000
 - ▲ 30,001 - 50,000
 - ▲ 50,001 - 100,000
 - ▲ More than 100,000 per day



Source: ©2016 Kalibrate Technologies

January 31, 2017



Traffic Count Profile

North Central Commons
11679 Ulysses St NE, Blaine, Minnesota, 55434
Rings: 1, 3, 5 mile radii

Prepared by HJ Development
Latitude: 45.18318
Longitude: -93.23948

Distance:	Street:	Closest Cross-street:	Year of Count:	Count:
0.13	117th Ave NE	Ulysses Ln NE (0.03 miles W)	2011	7,700
0.16	Ulysses St NE	117th Ave NE (0.19 miles SW)	2011	6,200
0.21	117th Ave NE	Fillmore St NE (0.02 miles E)	2011	5,200
0.28	Cloud Dr NE	Central Ave NE (0.04 miles W)	2011	5,300
0.34	Ulysses St NE	113th Ave NE (0.23 miles SE)	2011	3,250
0.36	Aberdeen St NE	Club West Pkwy NE (0.05 miles S)	2011	4,450
0.36	Aberdeen St NE	119th Ln NE (0.09 miles N)	2011	7,100
0.43	Polk St NE	114th Ct NE (0.06 miles SE)	2011	490
0.49	Paul Pkwy NE	Ulysses St NE (0.03 miles W)	2011	4,500
0.57	113th Ave NE	Polk St NE (0.07 miles W)	2011	940
0.62	Central Ave NE	113th Ave NE (0.04 miles N)	2010	44,500
0.66	119th Ave NE	Cloud Dr NE (0.09 miles W)	2011	1,700
0.71	Paul Pkwy NE	Fillmore St NE (0.05 miles E)	2011	3,500
0.71	Oak Park Blvd NE	Paul Pkwy NE (0.04 miles N)	2011	2,700
0.72	Aberdeen St NE	122nd Ln NE (0.02 miles S)	2011	6,100
0.73	Central Ave NE	123rd Ave NE (0.03 miles NE)	2010	36,000
0.79	Oak Park Blvd NE	Tyler St NE (0.04 miles N)	2011	5,000
0.80	Ulysses St NE	123rd Ln NE (0.05 miles S)	2011	5,600
0.84	Jefferson St NE	Oak Park Dr NE (0.03 miles S)	2011	2,700
0.90	Jefferson St NE	Terrace Rd NE (0.08 miles N)	2011	1,950
0.96	Club West Pkwy NE	Club West Cir NE (0.01 miles S)	2011	11,200
0.96	Main St NE	Ulysses St NE (0.11 miles E)	2011	18,600
0.98	Fillmore St NE	109th Ave NE (0.06 miles S)	2011	370
0.99	Ulysses St NE	109th Ln NE (0.03 miles N)	2011	3,850
1.03	Jefferson St NE	Washington St NE (0.03 miles S)	2011	3,200
1.04	117th Ave NE	117th Ln NE (0.02 miles E)	2011	4,850
1.04	109th Ave NE	Ulysses St NE (0.05 miles E)	2011	13,700
1.12	Main St NE	Aberdeen St NE (0.18 miles W)	2011	14,100
1.12	109th Ave NE	Club West Pkwy NE (0.06 miles E)	2011	16,200
1.17	121st Ave NE	7th St NE (0.03 miles NE)	2011	1,950

Data Note:The Traffic Profile displays up to 30 of the closest available traffic counts within the largest radius around your site. The years of the counts in the database range from 2016 to 1963. Over 25% of the counts were taken between 2010 and 2016 and over 77% of the counts were taken between 2000 and 2016. Traffic counts are identified by the street on which they were recorded, along with the distance and direction to the closest cross-street. Distances displayed as 0.00 miles (due to rounding), are closest to the site. A traffic count is defined as the two-way Average Daily Traffic (ADT) that passes that location.

Source: ©2016 Kalibrate Technologies