

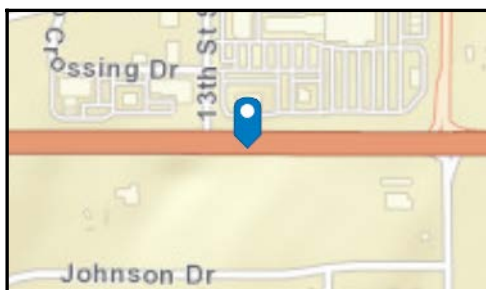
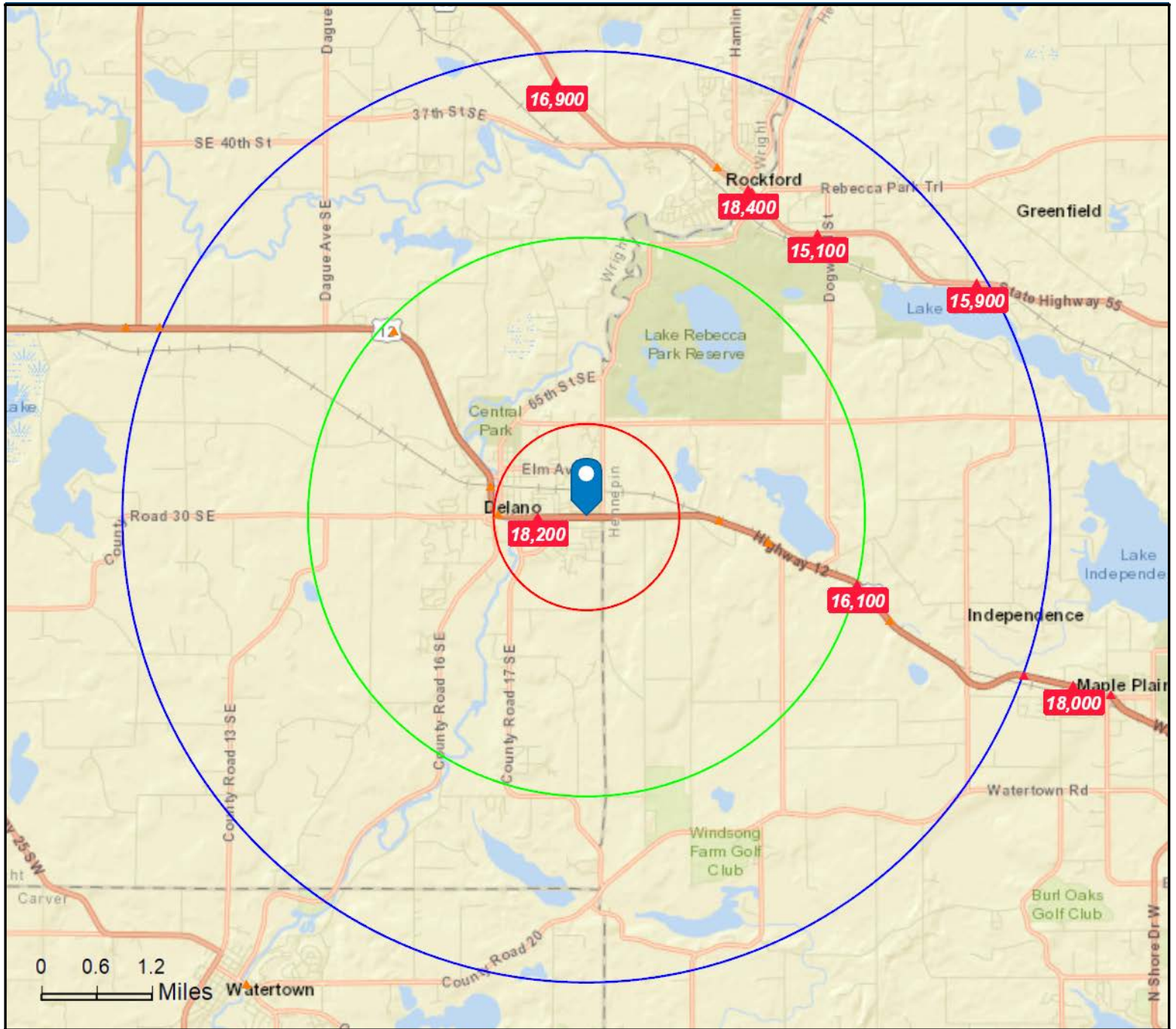
Traffic count map provided by MNDOT office of Transportation & Data Analysis (www.dot.state.mn.us).



Traffic Count Map

Harvest Ridge
5885 Highway 12 SE, Delano, Minnesota, 55328
Rings: 1, 3, 5 mile radii

Prepared by HJ Development
Latitude: 45.03549
Longitude: -93.77037



- Average Daily Traffic Volume**
- ▲ Up to 6,000 vehicles per day
 - ▲ 6,001 - 15,000
 - ▲ 15,001 - 30,000
 - ▲ 30,001 - 50,000
 - ▲ 50,001 - 100,000
 - ▲ More than 100,000 per day



Source: ©2019 Kalibrate Technologies (Q4 2019).

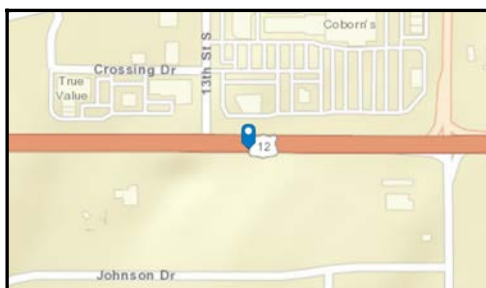
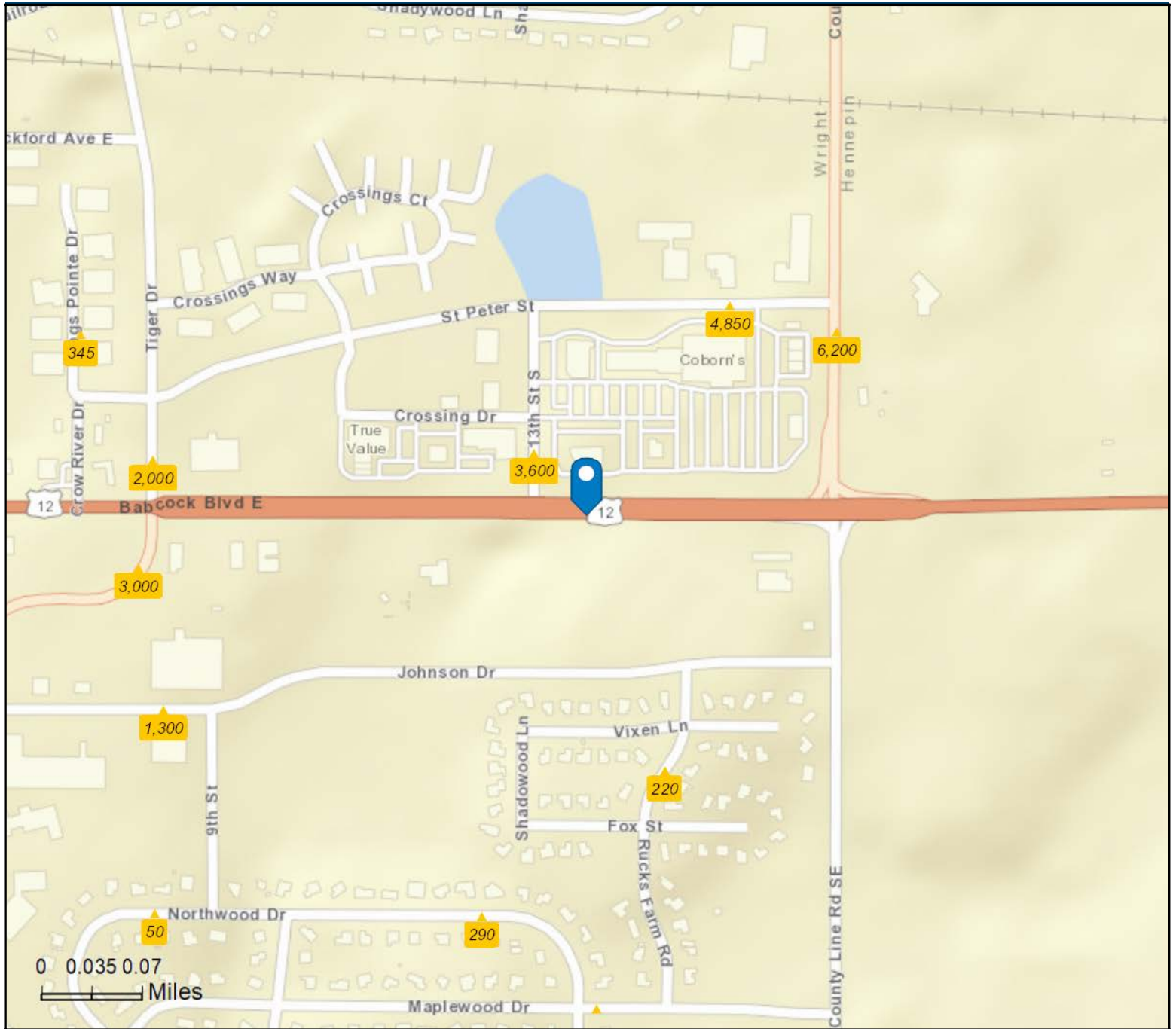
May 15, 2020



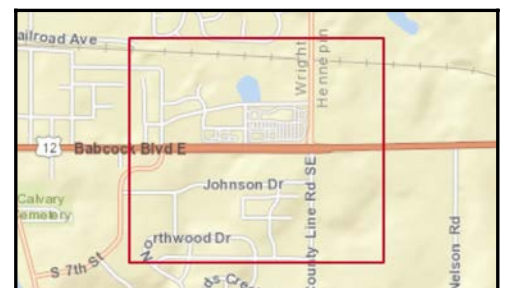
Traffic Count Map - Close Up

Harvest Ridge
5885 Highway 12 SE, Delano, Minnesota, 55328
Rings: 1, 3, 5 mile radii

Prepared by HJ Development
Latitude: 45.03549
Longitude: -93.77037



- Average Daily Traffic Volume**
- ▲ Up to 6,000 vehicles per day
 - ▲ 6,001 - 15,000
 - ▲ 15,001 - 30,000
 - ▲ 30,001 - 50,000
 - ▲ 50,001 - 100,000
 - ▲ More than 100,000 per day



Source: ©2019 Kalibrate Technologies (Q4 2019).

May 15, 2020



Traffic Count Profile

Harvest Ridge
5885 Highway 12 SE, Delano, Minnesota, 55328
Rings: 1, 3, 5 mile radii

Prepared by HJ Development
Latitude: 45.03549
Longitude: -93.77037

Distance:	Street:	Closest Cross-street:	Year of Count:	Count:
0.06	13th St	Crossings Dr (0.04 miles N)	2016	3,600
0.17	St Peter Ave	SE Gabler Ave (0.07 miles E)	2016	4,850
0.18	Rucks Farm Rd	Vixen Ln (0.03 miles NE)	2016	220
0.21	SE Gabler Ave	St Peter Ave (0.02 miles N)	2016	6,200
0.28	Northwood Dr	10th St S (0.13 miles W)	2016	290
0.30	Tiger Dr	US Hwy 12 (0.03 miles S)	2016	2,000
0.31	7th St S	Johnson Dr (0.1500001 miles SW)	2016	3,000
0.32	Johnson Dr	7th St S (0.14 miles W)	2016	1,300
0.34	Maplewood Dr	Southwood Dr (0.01 miles W)	2016	1,200
0.37	Kings Pointe Dr	Crow River Dr (0.05 miles S)	2008	345
0.40	Northwood Dr	9th St S (0.04 miles E)	2008	50
0.52	Elm Ave E	SE Gabler Ave (0.06 miles E)	2016	1,650
0.53	Babcock Blvd E	5th St S (0.05 miles W)	2016	18,200
0.58	5th St S	Babcock Blvd E (0.03 miles S)	2016	750
0.60	SE Gabler Ave	Elm Ave E (0.07 miles S)	2016	4,900
0.61	Saint Peter Ave E	5th St S (0.02 miles E)	2016	590
0.65	7th St S	Industrial Ave (0.05 miles NE)	2016	2,150
0.78	River St S	7th St S (0.12 miles S)	2016	2,150
0.79	3rd St S	Saint Peter Ave E (0.05 miles S)	2008	135
0.84	SE Gabler Ave	Country Ln (0.0 miles S)	2011	4,575
0.84	River St S	2nd St S (0.01 miles NW)	2016	2,150
0.86	Co Rd 17 SE	River St S (0.0 miles N)	2016	2,700
0.89	Railroad Ave E	3rd St S (0.03 miles E)	2008	980
0.89	Saint Peter Ave E	River St S (0.03 miles W)	2016	215
0.93	Bridge Ave E	3rd St N (0.03 miles E)	2008	860
0.93	Rockford Ave E	River St S (0.03 miles W)	2008	195
0.94	2nd St N	Railroad Ave E (0.04 miles S)	2016	410
0.95	Babcock Blvd W	Woodland Rd (0.04 miles NW)	2016	14,900
0.96	Railroad Ave E	River St N (0.03 miles W)	2016	1,020
0.97	3rd St N	Oak Ave E (999.98999023 miles N)	2008	175

Data Note:The Traffic Profile displays up to 30 of the closest available traffic counts within the largest radius around your site. The years of the counts in the database range from 1919 to 1963. Over 25% of the counts were taken between 2010 and 2019 and over 77% of the counts were taken between 2000 and 2019. Traffic counts are identified by the street on which they were recorded, along with the distance and direction to the closest cross-street. Distances displayed as 0.00 miles (due to rounding), are closest to the site. A traffic count is defined as the two-way Average Daily Traffic (ADT) that passes that location.

Source: ©2019 Kalibrate Technologies (Q4 2019).