



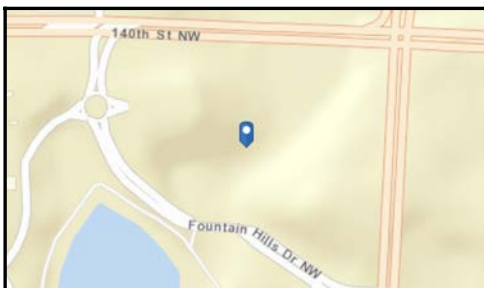
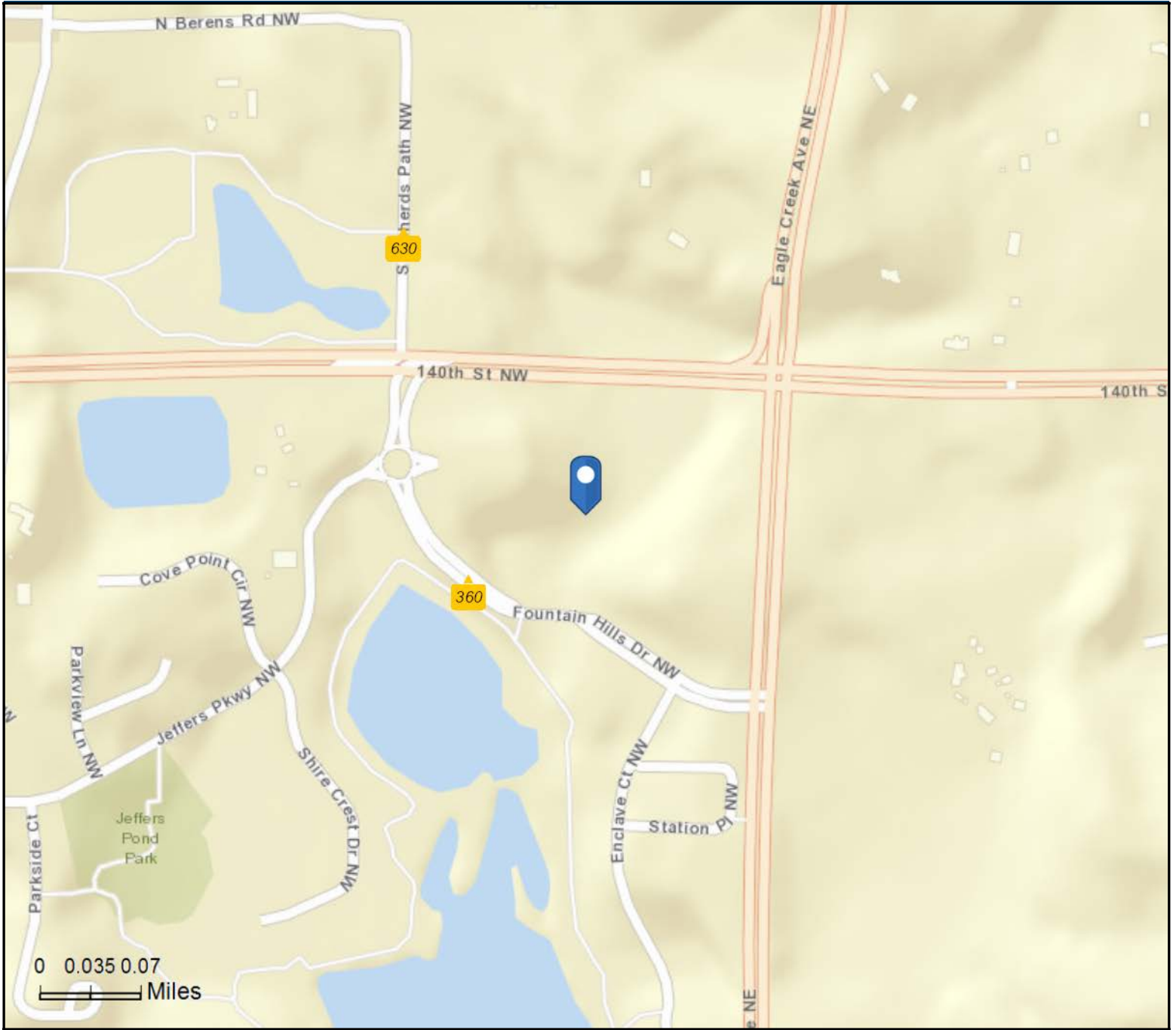
Traffic count map provided by MNDOT office of Transportation & Data Analysis (www.dot.state.mn.us).



Traffic Count Map - Close Up

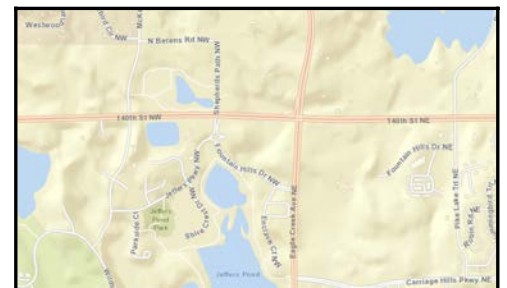
Jeffers Commons
3950 Fountain Hills Dr NW, Prior Lake, Minnesota, 55372
Rings: 1, 3, 5 mile radii

Prepared by HJ Development
Latitude: 44.74543
Longitude: -93.44213



Average Daily Traffic Volume

- ▲ Up to 6,000 vehicles per day
- ▲ 6,001 - 15,000
- ▲ 15,001 - 30,000
- ▲ 30,001 - 50,000
- ▲ 50,001 - 100,000
- ▲ More than 100,000 per day



Source: ©2019 Kalibrate Technologies (Q1 2019).

August 07, 2019



Traffic Count Profile

Jeffers Commons
3950 Fountain Hills Dr NW, Prior Lake, Minnesota, 55372
Rings: 1, 3, 5 mile radii

Prepared by HJ Development
Latitude: 44.74543
Longitude: -93.44213

Distance:	Street:	Closest Cross-street:	Year of Count:	Count:
0.09		(0.0 miles)	2017	360
0.23	McKenna Rd NW	140th St NW (0.09 miles S)	2015	630
0.43		(0.0 miles)	2017	2,150
0.49	Carriage Hills Pkwy	Carriage Ln NE (0.06 miles E)	2017	1,800
0.50	Fountain Hills Dr NE	Fountain Hills Ct NE (0.06 miles E)	2011	1,450
0.57	Fountain Hills Dr NE	Fountain Hills Ct NE (0.01 miles W)	2017	1,850
0.62	Pike Lake Trl NE	Fountain Hills Dr NE (0.02 miles N)	2015	3,500
0.63	140th St NW	White Diamond Rd NW (0.07 miles E)	2011	13,200
0.64	Pike Lake Trl NE	140th St NE (0.06 miles S)	2015	390
0.72	Eagle Creek Ave NE	Coachman Ln NE (0.01 miles N)	2017	13,900
0.73	McKenna Rd NW	Westwoodland Trl NW (0.08 miles S)	2017	1,550
0.81	Carriage Hills Pkwy	Pike Lake Trl NE (0.04 miles W)	2017	1,550
0.86		(0.0 miles)	2017	11,300
0.94	Carriage Hills Pkwy	Nightingale Cir NE (0.01 miles E)	2011	1,300
1.12	Wilds Pkwy NW	Fox Run NW (0.1 miles E)	2017	1,100
1.21	140th St NE	Meadowlawn Trl NE (0.06 miles W)	2011	21,800
1.22	140th St NW	Canterbury Rd (0.14 miles W)	2017	12,000
1.29	Wilds Pkwy NW	Wood Duck Trl NW (0.09 miles W)	2017	1,600
1.35	Mystic Lake Dr NW	Wilds Path NW (0.1 miles S)	2014	17,000
1.36	Pike Lake Rd	Jackson Trl NE (0.19 miles S)	2015	1,200
1.41	Mystic Lake Dr NW	Sioux Trl NW (999.98999023 miles E)	2011	18,600
1.44	154th St NW	Majestic Ln NW (0.04 miles E)	2014	11,800
1.47	Canterbury Rd	Valley View Rd (0.49000001 miles N)	2017	17,900
1.49	140th St NE	Ferndale Ave NE (0.12 miles W)	2017	17,400
1.53	Fremont Ave NW	Crystal Bay Ln NW (0.02 miles N)	2015	3,500
1.54	154th St NW	Glynwater Trl NW (0.1 miles W)	2017	12,100
1.55	Carriage Hill Rd NE	Amblewood Dr NE (0.02 miles W)	2014	820
1.55	Eagle Creek Blvd	Pike Lake Rd (0.2 miles E)	2017	3,400
1.59	Eagle Creek Blvd	Pike Lake Rd (0.43000001 miles E)	2011	3,400
1.62	Crest Ave NE	Cedarwood St NE (0.02 miles S)	2017	1,700

Data Note:The Traffic Profile displays up to 30 of the closest available traffic counts within the largest radius around your site. The years of the counts in the database range from 2019 to 1963. Over 25% of the counts were taken between 2010 and 2019 and over 77% of the counts were taken between 2000 and 2019. Traffic counts are identified by the street on which they were recorded, along with the distance and direction to the closest cross-street. Distances displayed as 0.00 miles (due to rounding), are closest to the site. A traffic count is defined as the two-way Average Daily Traffic (ADT) that passes that location.

Source: ©2019 Kalibrate Technologies (Q1 2019).